

# LA 10.4D

- Easy handling
- Intuitive amplifier operation with 3.5" Touch-LCD
- Full control with 'SE Mission Control' remote software
- Integrated DSP for advanced signal processing and system tuning
- Dante® networked-audio (optional) and remote network control



**Head office**  
speaker trade e.K.  
Neuenhofer Strasse 42-44  
42657 Solingen, Germany  
P +49 212 38226-0  
info@se-audiotechnik.com  
www.se-audiotechnik.com  
Facebook: /se\_audiotechnik  
Instagram: /se\_audiotechnik  
Twitter: /seaudiotechnik

© 2022 SE AUDIOTECHNIK is a registered trademark of Speaker Electronic (Jia Shan) Co., Ltd.  
All other trademarks are the property of their respective owners. Speaker Electronic (Jia Shan) Co., Ltd. and its subsidiaries and products are not affiliated with, endorsed by, sponsored by or supported by those trademark owners.  
Ease® is a registered trademark of AFMG Technologies GmbH. Powercon® is a registered trademark of Neutrik AG. The "f" logo is a registered trademark of Facebook, Inc.. The camera logo is a registered trademark of Instagram, LLC.. The "in" logo is a registered trademark of LinkedIn corporation. The bird logo is a registered trademark of Twitter, inc..  
Design by pixelmaedchen.de | Renderings by www.redemann-media.de | Photos by www.annikafeuss.com  
Photo by © Jag\_cz (AdobeStock)  
All product specifications in this document are subject to change without notice.  
L-Line brochure v. 2022/07



# L-LINE

LIGHT, STRONG, CLEVER



www.se-audiotechnik.de

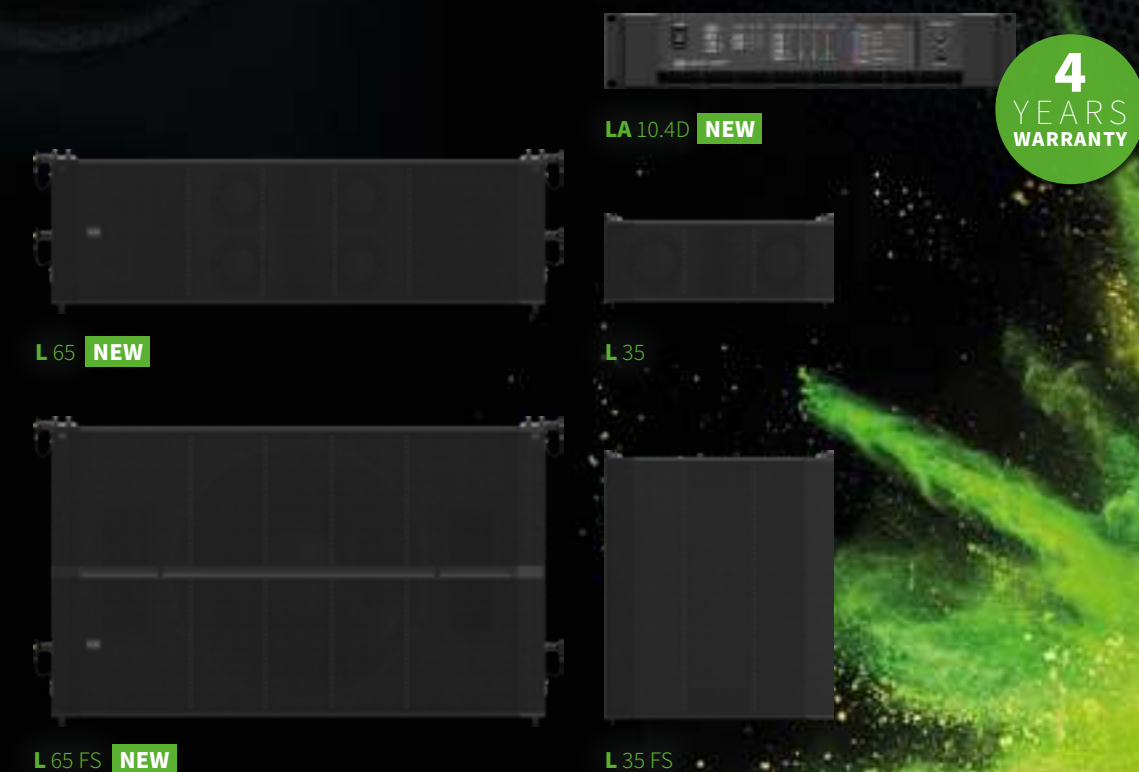
# L-LINE

EASY HANDLING, ROBUST SOUND, FULL CONTROL

The L-Line is our easy-handling line array for installers, rental companies and professional performers. We developed one of the most compact, scalable, professional PA solutions for small to large events. The L-Line allows you to control the sound field from your workstation using dedicated SE Mission Control software. This provides you with the option to customize every parameter of your L-Line system. Scale the system to your needs and requirements with the flexible combination of L-Line line array cabinets, flyable subwoofers and accessories.

The powerful speakers provide for massive thrust indoors and outdoors at large installations and on tour. The power required for operating your system is delivered by the LA 10.4D – a modern Class-D amplifier. Providing rich 4 x 2,500 W of power, network control and networked audio (optional) the LA 10.4D is the amp of choice for all non-self-powered SE speakers. Tailormade speaker presets and a smart, intuitive interface, including storage for user presets, ensures a reliable, fast and convenient setup. The SE Mission Control software keeps you in total control of the system at all time. Easy, worry free handling enables quick and uncomplicated optimization and tuning of your system.

In short, the L-Line is a clever solution!





L 35

DISCREET SOLUTION FOR ROBUST SOUND

Big sound in smaller locations: L 35 line arrays can be set up in even low-ceilinged rooms providing a rocksolid sound.

The L 35 is loud. Especially when its lightweight construction is taken into account: The 2-way speaker weighs less than 4 kg and is as small as a shoebox. At the same time, this system can reach up to an incredible 123 dB max. SPL with a single cabinet.

L 35 is designed to provide you with an unobtrusive, clean look and feel. The clever cabling makes the setup flexible and easy. The integrated three-point rigging system ensures safe and convenient rigging, stacking and suspension.

At all times, the L 35 always offers more than enough power: In proportion to its weight, it reaches an incredible 34 dB/kg.

Because the L 35 is so handy and visually discrete, it is clever for installations and also suitable for mobile applications.

And an other plus: Vertically, its compact design allows for a wide range of splay angles.



L 35 FS

IT'S THAT EASY TO GET MORE LOW-END

The L 35 FS is the smart bass extension for the L 35 – not only on the ground, but also suspended along the array.

This tiny 9 kg unit generates 128 dB SPL for a fundamental great, round and powerful sound. The L 35 FS features an 8" driver and supports the array from 47 Hz upwards.

The L 35 FS features the same integrated three-point rigging system and unobtrusive design as the L 35. This flysub enables you to set up a L 35 fullrange system.

For planning professionals, it is ideal if you need something that sounds big, but where visual discretion is required. Additionally, the compact design allows for more vertical splay angles.

L 35 FS flysub extends the application range of the L 35 line array considerably. The L 35 FS can be flown or stacked and can be used on its own or together with the L 35. As with the entire product family, the Flysub is available as an indoor or outdoor version.



L 65

OUR PROFESSIONAL ALL-ROUNDER

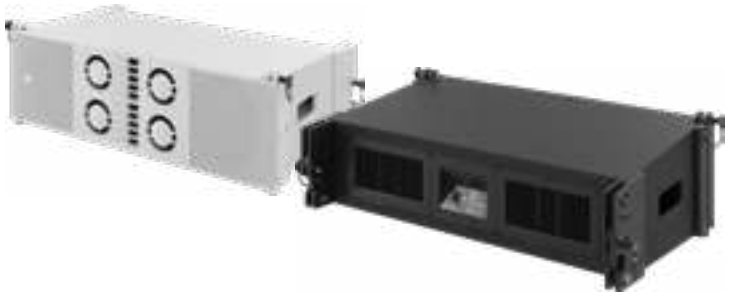
The L 65 performs great in every application! This passive 3-way line array is a reliable, scalable all-rounder for install and mobile applications. With an SPL of 139 dB at a weight of less than 23 kg, the sound is massive and sounds in every frequency range homogeneous and great.

The rigging is easy – the integrated four-point rigging system allows for safe and uncomplicated suspension.

The L 65 features a passive 3-way system ensuring linear transmission in the crossover frequency range and optimized power performance.

The drivers (LF: 2 x 6.5", MF: 4 x 3.5" HF: 2 x 1") provide an assertive, neutral sound across the entire frequency range. Thanks to the passive construction, up to three L 65 can be used on a single power amplifier channel. This makes the combination of L 65 and LA 10.4D a cost-effective system.

We developed the L 65 in Germany and all components are matched to one another precisely to deliver a wide frequency range and high maximum sound pressure with minimal distortion. With their tough outer skin, low weight and fast array assembly



and disassembly, the L 65 is ideal for fixed and mobile installations and also a great tour companion.

Its homogeneous sound characteristics as well as mechanical and acoustical design can perfectly combine with other elements of the L-Line. The super smart inline concept holds the opportunity to add L 35 as downfills by using a simple under frame bumper. Adding the L-Line flyable subwoofers guarantee for rich and powerful lows.

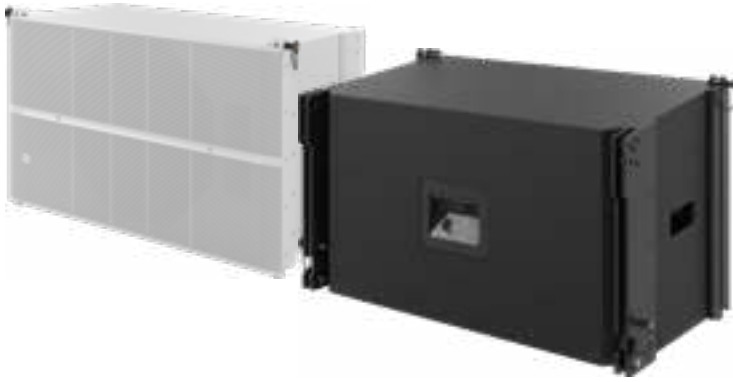
L 65 FS

FUNDAMENT FOR THE GREAT SOUND

When there is no room for floor subwoofers in front of the stage, and you need a wide dispersion, the L 65 FS is a brilliant solution. This slim flysub in the L 65 line array provides a massive boost and punchy and clear bass from 45 Hz upwards. This makes it suitable for fixed and mobile installations, sound rental companies and any live events with high sound performance requirements.

The powerful 15" driver with neodymium magnet provides a stable bass foundation – thus the L 65 FS remains pleasantly light. At only 30 kg, it is easy to handle and allows for an uncomplicated use. Its compact shape, easy set-up thanks to the low weight and its sound pressure of 131 dB make the L 65 FS a reliable sound companion. The L 65 FS features the same integrated four-point rigging system as the L 65 and allows for quick and easy system setup. Both in terms of the sound characteristics and the dimensions, it is ideal as a complement to L 65 arrays. Angles of up to 8° provide additional flexibility to align flying systems.

Thanks to its versatile mounting options and balanced sound characteristics, the L 65 FS is also a sophisticated and aesthetic solution for installations. With fixed installations, its compact size and minimal weight come to the fore – and it sounds much



"heavier" than it is!

Furthermore, in applications where seating is close to the stage, you will appreciate flying this lightweight, powerful bass. Wherever the journey takes you, this flysub is the brilliant solution for every job.

LA 10.4D

SIMPLE, CLEVER, POWERFUL

We developed the LA 10.4D so that you remain in control at all times. The 4-channel system amplifier with 4x 2,500 W is tailor-made for our SE product portfolio, from line array systems to subwoofers, point source loudspeakers and monitors.

Speaker presets unleashes the best possible performance and are also designed for various applications. This feature enables you to build custom setups with perfectly matched sound characteristics.

Your personal assistant allows for full performance monitoring. In this amplifier, the signal processing is optimized and all parameters can be set centrally with full and flexible control.

With this core piece, you will keep the overview: Your power station features a high-quality processed integrated DSP, a Dante® network audio connection (optional) and remote network control. To optimize the system, you can count on reliable tools: EQs, Delays and FIR filtering.



All parameters can be adjusted with the SE Mission Control software or stand-alone on the amp by using the LCD touch screen. The intuitive user interface ensures your supremacy. Adapt the system to your personal workflow. Use Custom Controllers with cross-parameter and group control. Define what you would like to have on hand to directly interact with the L-Line system. Save your setting to and be always ready for the show. Presets and Custom Controllers are stored in the amplifier.



SPECIFICATIONS

LA 10.4D	
ELECTRICAL	
Type	Networked DSP amplifier with 4x BTL Class-D and Switch Mode Power Supply
Channels	Four
Output Power <sup>1</sup>	4 x 1200 W @ 8 Ω, 1 kHz, 1%THD 4 x 1400 W @ 8 Ω, 1 kHz, 2%THD 4 x 1700 W @ 4 Ω, 1 kHz, 1%THD 4 x 2500 W @ 4 Ω, 1 kHz, 2%THD 4 x 1400 W @ 8 Ω, 50 Hz, 4%THD 4 x 1500 W @ 4 Ω, 50 Hz, 4%THD 4 Ω (current limiter active)
Minimum load impedance	20 Hz to 20 kHz: -1 dB
Frequency response (Line In) (4 Ω)	8 Ω: > 500 @ 1 kHz, 4 Ω: > 250 @ 1 kHz
Damping factor	> 20 kΩ balanced
Input impedance	> 20 kΩ balanced
Maximum input level	+22 dBu
SNR Line in to Spk out	110.7 dB, 113.5 dB(A) (@1500 W/8 Ω, +42 dBu)
Noise Floor	-68.7 dBu (280 uV), -71.5 dBu(A) (200 uV(A))
Channel crosstalk	-97.8 dB
THD+N	< 0.0087% at 175 W into 4 Ω (1/8th of Rated Power) < 0.0095% at 350 W into 4 Ω (1/4th of Rated Power)
DSP	48/96 kHz, 32 bit SHARC DSP with floating point processing
System latency	1 ms to 10 ms (preset dependent)
Protection	Short circuit, overheating, overcurrent
Cooling	Two fans with temperature dependant speed and tach feedback, Front-to-back air flow
Power efficiency	Up to 70%
Power consumption (both PowerCON® summed)	Off: 3 W, Idle: 70 W, at 1/8 of Rated power: 1000 W, at 1/4 of Rated power: 2000 W, at 1/3 of Rated power: 2666 W, Peak power: 8000 W
Inrush current (per PowerCON®)	40 A (<1 ms) when connected to mains, 9 A (<250 ms) when switching on
Operating voltage range	90 – 265 VAC 50/60 Hz

HARDWARE	
Indicators	- 4x Input signal level Led: -30dB, -12dB, -6dB, Clip - 4x Channel Led: Mute, Active, -30dB, -12dB, -6dB, Limit, Protect - 6x Status Led: Dante, AES1+2, AES3+4, LAN, Stand-By, Fault
Screen	3.5" TFT Color display with Touch Panel & 320 x 240 resolution RGB Control encoder with push-button, Touch Screen, 4x channel MUTE, Power On
User controls	Control encoder with push-button, Touch Screen, 4x channel MUTE, Power On
Input connectors	4x XLR-3 male line-level inputs and buffered link outputs 2x XLR-3 male AES/EBU inputs and buffered link outputs 1x Dante® 4ch input via separate etherCON® terminal (optional) 1x Network control via separate etherCON® terminal 1x Front USB
Output connectors	4x Neutrik SpeakON® NL4 outputs
Power connector	1x powerCON® 32A
SOFTWARE	
DSP Features	Levels, Parametric EQ, Delay, Phase, RMS Limiter, Peak Limiter, IIR/FIR Filtering
Configuration handling	Loading of factory presets provided by SE AUDIOTECHNIK, Saving and recalling of user presets
Remote control via network	Controlling of individual amplifiers or parameter-groups in distributed amplifiers via desktop software, Configuring of arbitrary numbers of amplifiers with parameters
Monitoring	Temperatures, Fan speeds, Voltages, Connection states, Fault states, System events, Runtime
MECHANICAL	
Product dimensions [H x W x D]	89 x 483 x 480 mm / 2 RU
Net weight	14.5 kg
Packaging dimensions [H x W x D]	183 x 650 x 565 mm
Total weight	16.5 kg
Cabinet	Aluminum front panel, steel housing
Rack mounting	Four frontal 6 mm holes at sides
Operating ambient temperature range	[5°C ; 40°C]
Storage temperature range	[-20°C ; 90°C]
Ingress Protection	IP20

	L 35	L 35 FS	L 65	L 65 FS
ACOUSTICAL				
Frequency range (-3 dB) <sup>1</sup>	110 Hz - 18 kHz	60 Hz - 730 Hz	95 Hz - 17.5 kHz	60 Hz - 200 Hz
Frequency range (-10 dB) <sup>1</sup>	95 Hz - 19 kHz	47 Hz - 790 Hz	60 Hz - 18 kHz	45 Hz - 275 Hz
Coverage angles (-6 dB) [H x V]	100° x 20°	Omnidirectional	100° x 20°	Omnidirectional
Nominal impedance	16 Ω	8 Ω	12 Ω	8 Ω
Sensitivity <sup>1</sup>	91 dB	91 dB	102 dB	92 dB
Peak power	400 W	1200 W	1300 W	2000 W
Continuous power <sup>2</sup>	100 W	300 W	330 W	500 W
Maximum Peak SPL <sup>3</sup>	123 dB	128 dB	139 dB	131 dB
System type	2-way passive system	1-way passive system	3-way passive system	1-way passive system
Crossover frequency	2.2 kHz	-	MF: 400 Hz / HF: 1.8 kHz	-
Transducers	LF: 2 x 3.5" drivers (1" voice coil) MHF: 1" compression driver (1.4" voice coil)	1 x 8" driver (2.6" voice coil)	LF: 2 x 6.5" woofers (2" voice coil) MF: 4 x 3.5" drivers (1" voice coil) HF: 2 x 1" compression drivers (1.4" voice coil)	1 x 15" woofer (4" voice coil)
Enclosure type	Vented box	Vented box	Vented box	Vented box
Connectors	1x Input signal 1x Link output Neutrik speakON® NL4	1x Input signal 1x Link output Neutrik speakON® NL4	1x Input signal 1x Link output Neutrik speakON® NL4	1x Input signal 1x Link output Neutrik speakON® NL4
Wiring	Input signal: switchable 1+/1- or 2+/2- Link output: 1+/1- and 2+/2-	Input signal: switchable 1+/1- or 2+/2- Link output: 1+/1- and 2+/2-	Pins 1+/1- (both NL4): drivers Pins 2+/2- (both NL4): link signal	Pins 1+/1- (both NL4): drivers Pins 2+/2- (both NL4): link signal
MECHANICAL				
Product dimensions [H x W x D] (including rigging)	131 x 312 x 234 mm	379 x 312 x 244 mm	237 x 766 x 383 mm	447 x 766 x 385 mm
Weight	3.6 kg	9.1 kg	22.7 kg	30 kg
Packaging dimensions [H x W x D]	225 x 415 x 311 mm	473 x 410 x 340 mm	363 x 810 x 480 mm	573 x 810 x 480 mm
Total weight	4.7 kg	10.2 kg	25 kg	33 kg
Cabinet	12 mm plywood with die-cast aluminum front	12 mm plywood with die-cast aluminum front	12 mm plywood with die-cast aluminum front	12 mm plywood with die-cast aluminum front
Cabinet finishing	Black or white polyurea coating	Black or white polyurea coating	Black or white* polyurea coating	Black or white* polyurea coating
Grille	Powder coated perforated steel	Powder coated perforated steel	Powder coated perforated steel	Powder coated perforated steel
Hardware <sup>4</sup>			Side handles in plywood embedded in cabinet Two rear heatsink panels	Side handles in plywood embedded in cabinet
Rigging	Three-point rigging system: two front and one rear 6 mm SE AUDIOTECHNIK locking pins.	Three-point rigging system: two front and one rear 6 mm SE AUDIOTECHNIK locking pins.	Four-point rigging system: two front and two rear 8 mm SE AUDIOTECHNIK locking pins.	Four-point rigging system: two front and two rear 8 mm SE AUDIOTECHNIK locking pins.
Splay angles	0°, 2.5°, 5°, 7.5°, 10°	0°	0°, 1°, 2°, 3°, 4°, 6°, 8°	0°, 1°, 2°, 3°, 4°, 6°, 8°
ACCESSORIES				
Bumper frame	L 35 BF	L 35 BF	L 65 BF	L 65 BF
L35 Under frame adapter			L 65 UFB	L 65 UFB
U-bracket	L 35 UB			
Stacking frame for B 15 or B 15A subwoofers	B 15 SFI L35			
Stacking frame for B 18 subwoofer	B 18 SFI L35			
Pole bar	SPS20			

<sup>1</sup> Whole space, 1W / 1m, on axis (depending on amplifier preset)  
<sup>2</sup> According to EIA-426B Standard (based on RMS Voltage)  
<sup>3</sup> Max Peak SPL = Sensitivity + 10log<sub>10</sub>(Continuous Power) + 12 dB Crest Factor  
<sup>4</sup> White cabinet finish on request  
<sup>5</sup> Hardware and technical data of outdoor versions can be different

<sup>1</sup> According to CEA-2006



# L35 R

## PRODUCT FEATURES

- High Max. SPL (up to 123 dB per single cabinet)
- 100° x 20° directivity
- Clear and natural sound
- Very light weight (3.8 kg)
- Ultra-compact unobtrusive design
- Flexible and scalable system approach
- Built-in two-way input signal switch
- Integrated three-point rigging system
- Rigid front baffle made of die-cast aluminum
- High quality plywood cabinet with black or white polyurea coating
- IPX4 protection

## SPECIFICATIONS

ACOUSTICAL	
Frequency range (-3 dB) <sup>1</sup>	172 Hz - 18 kHz
Frequency range (-10 dB) <sup>1</sup>	134 Hz - 19 kHz
Coverage angles (-6 dB) [H x V]	100° x 20°
Nominal impedance	16 Ω
Sensitivity <sup>1</sup>	91 dB
Peak power	400 W
Continuous power <sup>2</sup>	100 W
Maximum Peak SPL <sup>3</sup>	123 dB
System type	2-way passive system
Crossover frequency	2.2 kHz
Transducers	LF: 2 x 3.5" drivers (1" voice coil) MHF: 1" compression driver (1.4" voice coil)
Enclosure type	Closed box
Connectors	Input signal: 1 x weatherproof Neutrik speakON® NLT4MP Link output: 1 x weatherproof Neutrik speakON® NLT4MP
Wiring	Input signal: switchable 1+/1- or 2+/2- Link output: 1+/1- and 2+/2-
MECHANICAL	
Product dimensions [H x W x D](including rigging)	131 x 315 x 234 mm
Weight	3.8 kg
Packaging dimensions [H x W x D]	225 x 415 x 311 mm
Total weight	4.9 kg
Cabinet	12 mm plywood with die-cast aluminium front
Cabinet finishing	Black or white polyurea coating
Grille	Powder coated perforated steel
Hardware	Additional front steel grille
Rigging	Three-point rigging system: two front and one rear 6 mm SE Audiotechnik® locking pins
Splay angles	0°, 2.5°, 5°, 7.5°, 10°
ACCESSORIES	
Bumper frame	L 35 BF
U-bracket	L 35 UB
Stacking frame for B 15 or B 15A subwoofers	B 15 SFi L35
Stacking frame for B 18 subwoofer	B 18 SFi L35
Pole bar	SPS 20

<sup>1</sup> Whole space, 1W / 1m, on axis

<sup>2</sup> According to EIA-426B Standard (based on RMS Voltage)

<sup>3</sup> Max Peak SPL = Sensitivity + 10log<sub>10</sub>(Continuous Power) + 12 dB Crest Factor

All product specifications are subject to change without prior notice.

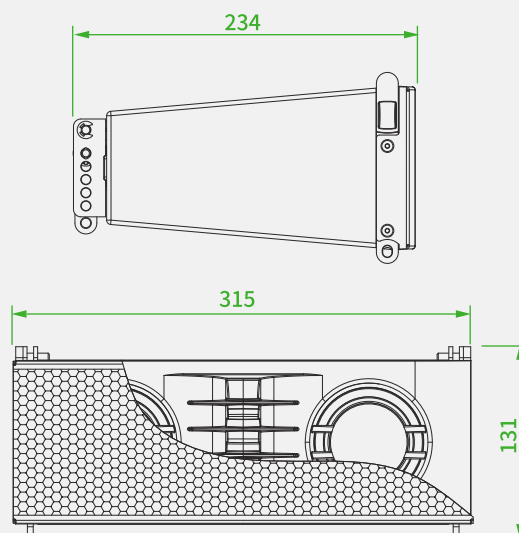


## PRODUCT DESCRIPTION

L 35 R is the waterproof version of L35 with an IPX4 rating. As an extremely compact line array, it features a sturdy die-cast aluminum front panel with an elegant mesh cover, two high-performance 3.5" neodymium drivers, and a 1" compression driver.

A single unit can deliver up to 123 dB peak SPL whilst maintaining its characteristic excellent sound quality. The L 35 R utilizes a passive two-way system with a sealed box, suitable for outdoor installed application. L35 R has an integrated crossover and 16 Ω nominal impedance, allowing a connection of up to four units in parallel when used in 4 Ω mode. Available in black and white.

## PRODUCT DRAWINGS



# L35 FS R

## PRODUCT FEATURES

- High Max. SPL (up to 124 dB per single subwoofer)
- Deep and powerful sound down to 57 Hz
- Very light weight (8.4 kg)
- Ultra-compact unobtrusive design
- Flexible and scalable system approach
- Built-in two-way input signal switch
- Integrated three-point rigging system
- High quality plywood cabinet with black or white polyurea coating
- IPX4 protection

## SPECIFICATIONS

ACOUSTICAL	
Frequency range (-3 dB) <sup>1</sup>	65 Hz - 123 Hz
Frequency range (-10 dB) <sup>1</sup>	57 Hz - 165 Hz
Coverage angles (-6 dB) [H x V]	Omnidirectional
Nominal impedance	8 Ω
Sensitivity <sup>1</sup>	86 dB
Peak power	1200 W
Continuous power <sup>2</sup>	300 W
Maximum Peak SPL <sup>3</sup>	124 dB
System type	1-way passive system
Transducers	1 x 8" driver (2.6" voice coil)
Enclosure	Vented box
Connectors	Input signal: 1 x weatherproof Neutrik speakON® NLT4MP Link output: 1 x weatherproof Neutrik speakON® NLT4MP
Wiring	Input signal: switchable 1+/1- or 2+/2- Link output: 1+/1- and 2+/2-
MECHANICAL	
Product dimensions [H x W x D] (Including rigging)	379 x 315 x 248 mm
Net weight	8.4 kg
Packaging dimensions [H x W x D]	473 x 410 x 340 mm
Total weight	9.5 kg
Cabinet	12 mm plywood
Cabinet finishing	Black or white polyurea coating
Grille	Powder coated perforated steel
Hardware	Additional front steel grille
Rigging	Three-point rigging system: two front and one rear 6 mm SE Audiotechnik® locking pins
Splay angles	0°
ACCESSORIES	
Bumper frame	L 35 BF

<sup>1</sup> Whole space, 1W / 1m, on axis

<sup>2</sup> According to EIA-426B Standard (based on RMS Voltage)

<sup>3</sup> Max Peak SPL = Sensitivity + 10log<sub>10</sub>(Continuous Power) + 12 dB Crest Factor

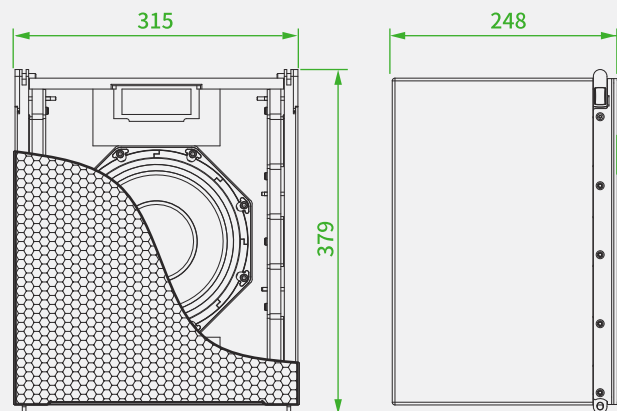
All product specifications are subject to change without prior notice.



## PRODUCT DESCRIPTION

L 35 FS R is the waterproof version of the L35 FS with IPX4 rating. It is an ultra-compact single 8" vented flyable bass extension, available as both an 8 Ω and a 16 Ω version. It produces 124 dB Peak SPL and delivers the same ease of operation and setup as the L 35 line array modules. L 35 FS R can be used in either stand-alone mode or in combination with ground stacked subwoofers in larger setups. It is available in black or white polyurea coating with a dedicated protective grille for outdoor use.

## PRODUCT DRAWINGS



# L 65 R

## PRODUCT FEATURES

- High Max. SPL (up to 139 dB per single cabinet)
- 100° x 20° directivity
- Assertive and natural sound
- Lightweight (23.4 kg)
- Compact unobtrusive design
- Flexible and scalable system approach
- Integrated four-point rigging system
- Rigid front baffle made of die-cast aluminum
- High quality plywood cabinet with black or white polyurea coating
- IPX5 protection

## SPECIFICATIONS

ACOUSTICAL	
<b>Frequency range (-3 dB)<sup>1</sup></b>	110 Hz - 17.5 kHz
<b>Frequency range (-10 dB)<sup>1</sup></b>	70 Hz - 18 kHz
<b>Coverage angles (-6 dB) [H x V]</b>	100° x 20°
<b>Nominal impedance</b>	12 Ω
<b>Sensitivity<sup>1</sup></b>	102 dB
<b>Peak power</b>	1300 W
<b>Continuous power<sup>2</sup></b>	330 W
<b>Maximum Peak SPL<sup>3</sup></b>	139 dB
<b>System type</b>	3-way passive system
<b>Crossover frequency</b>	MF: 400 Hz HF: 1.8 kHz
<b>Transducers</b>	LF: 2 x 6.5" woofers (2" voice coil) MF: 4 x 3.5" drivers (1" voice coil) HF: 2 x 1" compression drivers (1.4" voice coil)
<b>Enclosure type</b>	Vented box
<b>Connectors</b>	Input / Link signal: two weatherproof Neutrik speakON® NLT4MP
<b>Wiring</b>	Pins 1+/1- (both NLT4MP): drivers Pins 2+/2- (both NLT4MP): link signal
MECHANICAL	
<b>Product dimensions [H x W x D] (Including rigging)</b>	237 x 766 x 385 mm
<b>Weight</b>	23.4 kg
<b>Packaging dimensions [H x W x D]</b>	363 x 810 x 480 mm
<b>Total weight</b>	25.5 kg
<b>Cabinet</b>	12 mm plywood with die-cast aluminum baffle
<b>Cabinet finishing</b>	Black or white polyurea coating
<b>Grille</b>	Powder coated perforated steel
<b>Hardware</b>	2 side handles in plywood embedded in cabinet 2 rear heatsink panels Outdoor front steel grille
<b>Rigging</b>	Four-point rigging system: two front and two rear 8 mm SE Audiotechnik® locking pins
<b>Splay angles</b>	0°, 1°, 2°, 3°, 4°, 6°, 8°
ACCESSORIES	
<b>Bumper frame</b>	L 65 BF
<b>L35 Under frame adapter</b>	L 65 UFB

<sup>1</sup> Whole space, 1W / 1m, on axis

<sup>2</sup> According to EIA-426B Standard (based on RMS Voltage)

<sup>3</sup> Max Peak SPL = Max RMS SPL + 12 dB Crest Factor

All product specifications are subject to change without prior notice.



## PRODUCT DESCRIPTION

The L 65 R is the waterproof version of L65 with an IPX5 rating. It has been designed as a small- to medium-throw line array system which seamlessly blends into the L-Line environment. The cabinet design features an elegant mesh cover on the front grill. Waterproof connectors and bass-reflexed port ensures any outdoor installed applications.

The height of the unit is exactly twice that of the compact L 35 R. As such it covers the mid-hi section with four 3.5" woofers and two high-power 1" compression drivers.

With two accompanying 6.5" neodymium magnet woofers it delivers impressive punch and dynamics. Powered by L-Line system amplifiers, the line array utilizes precise DSP-controlled crossovers managed by dedicated filtering and limiting.

## PRODUCT DRAWINGS

