

MORE POWER

FOR A STRONG, NATURAL SOUND

800 W Class-D with switching power supply

24-Bit/48 kHz DSP

Customised presets

Status LEDs

Filter, delay and volume control





Head Office

speaker trade

Neuenhofer Straße 42-44
42657 Solingen, Germany

P +49 212 38226-10

info@se-audiotechnik.com

www.se-audiotechnik.com

f /seaudiotechnik

@ /se_audiotechnik

in /se-audiotechnik

t /seaudiotechnik

© 2021 **SE AUDIOTECHNIK®** is a registered trademark of Speaker Electronic (Jia Shan) Co. Ltd.

All other trademarks are the property of their respective owners. Speaker Electronic (Jia Shan) Co. Ltd. and its subsidiaries and products are not affiliated with, endorsed or sponsored by these trademark owners.

Ease® is a registered trademark of AFMG Technologies GmbH, powerCON® is a registered trademark of Neutrik AG, the „f“ logo is a registered trademark of Facebook Inc., the camera logo is a registered trademark of Instagram LLC, the „in“ logo is a registered trademark of LinkedIn Corporation, the bird logo is a registered trademark of Twitter Inc.

Design: pixelmaedchen.de | Renderings: www.redemann-media.de | Photos: www.annikafeuss.com Photo: © Lukas Gojda (AdobeStock)

All product specifications in this document are subject to change without notice.

M-LINE
COMPACT POWERHOUSES



M-LINE family

POWERFUL, CLEAR, PLUG & PLAY

The M-Line consists of compact, active line array modules. The simple scalability of an M-Line system allows for a maximum range of applications – from the professional sound boost for large events with several thousand visitors to small indoors and outdoors celebrations. When your aim is to have a powerful, natural sound – but there is little space for your gear or the speakers need to be installed discretely – that's when the M-Line comes to the fore.

INNOVATIVE DESIGN FOR AUTHENTIC SOUND

Horns direct and carry the sound. But they also distort the sound – as anyone who has ever used both hands to form a funnel around the mouth can confirm. The M-Line is based on an innovative, horn-free design with dome tweeters in an array to provide absolutely natural, unaltered sound without sacrificing the necessary sound pressure. The M-Line thus combines the advantages of both worlds – a wide dispersion angle with robust sound pressure and crystal-clear, natural sound.

PLUG & PLAY

Easy handling of the controls, tailor-made DSP presets and the small dimensions of the individual elements allow for exceptionally short set-up times with convincing results. All amplifiers feature intelligent DSP filters and limiters for excellent audio quality with optimally protected drivers.

All components are developed exclusively by **SE AUDIOTECHNIK®** and manufactured in our own production facilities.

Available in
**BLACK
&
WHITE**



S15 PRO **NEW**

S12 PRO

M-F3A FS

M-F3A PRO

M-F3A PRO

THE NEXT GENERATION OF COMPACT LINE ARRAY SYSTEMS

The M-F3A PRO is an ultra-compact, active line array system that uses a hornless design to produce crystal-clear sound without any unwanted alterations or distortion from pressure chamber effects. Thanks to the line array technology, ranges of up to 70 metres are now possible. The assertive mid and high frequencies in studio quality are dispersed horizontally at a 120-degree angle evenly across the room, while the vertical dispersion angle is 16 degrees.

The unique sound is achieved by integrating eight highly efficient 2.8" neodymium low-midrange speakers and seven 1" dome tweeters with direct dispersion in each unit. These drivers have been specially designed to deliver high efficiency and an impressive key note reproduction, making voices sound exceptionally rich and natural.

All drivers are mounted on a DIN-A4-sized front panel. Each system achieves up to 129 dB peak SPL and weighs only 8.3 kg, including amplifier and DSP. The impressive sound of the M-F3A PRO is achieved by a 2-channel 600 W Class-D power amplifier.

Level and Line Unit controls allow precise frequency response adjustments according to the number of units used in the array.



M-F3A FS

THE LONG AWAITED BASS ADDITION

The M-F3A FS is the flyable subwoofer for the M-F3A PRO Line Array systems. It utilizes two specially designed 6" x 9" woofers that provide high sound pressure levels whilst presenting a sleek and discreet design. This unit is twice as high as an M-F3A PRO. Thus, the modules complement each other perfectly in every way.

The system contains a newly developed 800 W Class-D amplifier and is equipped with a 24-bit/48 kHz DSP. The LCD display and rotary encoder allow the user to select and control various system parameters such as delay, EQ, filters and other parameters.

Configurations can be saved as user presets. In addition, our presets shorten setup times for existing M-Line systems in a wide variety of configurations. When suspended with an M-F3A PRO, this unit can deliver rich bass sounds for applications where there is insufficient space for floor subwoofers.

Improved rigging capabilities and a redesigned, expanded bumper frame provide additional flexibility when integrating this adaptable subwoofer into M-Line systems.



S12 PRO

COMPACT AND EFFICIENT FLOOR ADDITION TO THE M-LINE FAMILY

The S12 PRO is a compact active subwoofer that has been specially developed for our M-Line systems. It consists of a unique 12" driver in a bass-reflex configuration and is powered by an 800 W Class-D amplifier. Its efficient design and compact size make for a flexible installation in any environment. In addition, a two-point SE stacking system allows safe and easy stacking with secure locking.

The box contains a newly developed 800 W Class-D amplifier and is equipped with a 24-bit/48 kHz DSP. The LCD display and rotary encoder allow the user to select and control various system parameters such as delay, EQ, filters and other parameters. The built-in presets significantly reduce setup times for M-Line systems in various configurations. For example, select the preset for Endfire or cardioid arrays or a combination with a flysub. User-defined presets can also be stored.



S15 PRO

POWERFUL FLOOR ADDITION TO THE M-LINE FAMILY

The S15 PRO is the bigger and louder brother of the S12 PRO. It consists of a particularly potent 15" driver in a bass-reflex cabinet, powered by an internal high-performance amplifier. Its efficient design and compact size facilitate flexible placement in a wide range of environments. In addition, the two-point SE stacking system allows for safe and easy stacking.

The cabinet contains a newly developed 800 W Class-D amplifier and is equipped with a 24-bit/48-kHz DSP. The LCD display and rotary encoder allow the user to select and control various system parameters such as delay, EQ, filters and other parameters.

The built-in presets significantly reduce setup times for M-Line systems in various configurations. This makes it easy to set up subwoofer arrays by selecting one of the special factory presets. In addition, user-defined configurations can be saved as user presets.



SPECIFICATIONS

	M-F3A PRO	M-F3A FS	S12 PRO	S15 PRO
ELECTRO-ACOUSTICAL				
Frequency range (-6 dB)	110 Hz-18 kHz	53 Hz	40 Hz	40 Hz
Maximum Peak SPL *	129 dB *	127 dB *	133 dB **	136 dB **
Coverage (H x V)	120 ° - 16°	Omnidirectional	Omnidirectional	Omnidirectional
Enclosure	Bassreflex	Bassreflex	Bassreflex	Bassreflex
Transducers	MF: 8 x 2.8" drivers with neodymium magnet and cooling module, 0.75" voice coil HF: 7 x 1" dome tweeters with neodymium magnet and cooling module, 1" voice coil	2 x 6" by 9" drivers	1 x 12" driver with ferrite magnet and 3" voice coil	1 x 15" driver with ferrite magnet and 3" voice coil
AMPLIFICATION				
Connectors	Input signal: XLR Link output: XLR Power input: powerCON® 20A Power link output: powerCON® 20A	Input signal: XLR Link output: XLR Power input: powerCON® 20A Power link output: powerCON® 20A	Input signal: XLR Link output: XLR Power input: powerCON® 20A Power link output: powerCON® 20A	Input signal: XLR Link output: XLR Power input: powerCON® 20A Power link output: powerCON® 20A
Input sensitivity	0 dBu	0 dBu	0 dBu	0 dBu
Type	2 channel, class-D with SMPS	1 channel, class-D with SMPS	1 channel, class-D with SMPS	1 channel, class-D with SMPS
Total power	600 W	800 W	800 W	800 W
Power	MF: 300 W / HF: 300 W			
Protection	Short circuit, overheating, overcurrent	Short circuit, overheating, overcurrent	Short circuit, overheating, overcurrent	Short circuit, overheating, overcurrent
Cooling	12 cm x 12 cm heat sink	16 cm x 23 cm heat sink	16 cm x 23 cm heat sink	16 cm x 23 cm heat sink
DSP	48 kHz/24-bit with extended dynamics Processing latency: 1.1 ms	48 kHz/24-bit with extended dynamics Processing latency: 1.1 ms	48 kHz/24-bit with extended dynamics Processing latency: 1.1 ms	48 kHz/24-bit with extended dynamics Processing latency: 1.1 ms
Processing	EQ, multi-band limiting	Factory and user presets, EQ, delay, phase inversion	Factory and user presets, EQ, delay, phase inversion	Factory and user presets, EQ, delay, phase inversion
Control	Power: ON/OFF switch Level: 8-position rotary knob (-50, -20, -10, -6, -3, -2, -1, 0) Line units: 8-position rotary knob (1 - 8+)	Power: ON/OFF switch DSP: display with digital encoder	Power: ON/OFF switch DSP: display with digital encoder	Power: ON/OFF switch DSP: display with digital encoder
MECHANICAL				
Splay angles	0°, 1°, 2°, 3°, 4°, 6°, 8°	0°, 1°, 2°, 3°, 4°, 5°, 6°, 7°, 8°		
Rigging	3-point rigging with SE AUDIOTECHNIK® 6 mm locking pins	Four-point rigging system with SE Audiotechnik® 6 mm locking pins		
Stacking			Two-point SE AUDIOTECHNIK® stacking system	Two-point SE AUDIOTECHNIK® stacking system
Cabinet	12 mm plywood, black or white polyurea coating	15 mm plywood, black or white polyurea coating	15 mm plywood, black or white polyurea coating	15 mm plywood, black or white polyurea coating
Dimensions [H x W x D] (Including rigging)	317 x 265 x 359 mm	651 x 265 x 430 mm	507 x 385 x 495 mm	586 x 460 x 520 mm
Weight	8.3 kg	23 kg	23 kg	32 kg
Hardware	Rear handle in 12 mm plywood, plus two side grips, embedded in cabinet	Top grip embedded in cabinet	Two side grips embedded in cabinet, 4 rubber feet and top slots for stacking, M20 pole thread	Two side grips embedded in cabinet, 4 rubber feet and top slots for stacking, M20 pole thread

* flying (measured with 12 dB crest-factor pink noise, whole space)

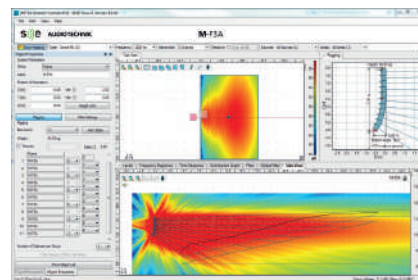
** on ground (measured with 12 dB crest-factor pink noise, half space)

EASE® & EASE® FOCUS 3

PROFESSIONAL SIMULATION DATA AVAILABLE

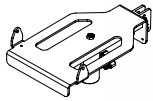
EASE® *.GLL files are available for all system components, including:
M-F3A PRO, S12 PRO, S15 PRO and M-F3A FS.

EASE® is an industry-specific acoustic simulation software for a wide range of applications and venues, especially for installations in churches, stadiums, event centres, PA systems, and other locations that normally require measurement.



Focus 3 can be downloaded free of charge on the AFMG website: <http://focus.afmg.eu>
The M-F3A PRO *.GLL files are available both from the AFMG Focus and our SE AUDIOTECHNIK® website.

ACCESSORIES



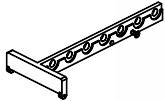
M-F3A UB
U-Bracket



M-F3A SFi S12
Ground Stacking
Frame

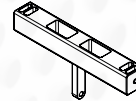


**Amplifier
rain cover**
Detachable rain
cover for S12 PRO
and M-F3A FS

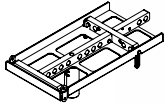


M-F3A BF
Bumper Frame

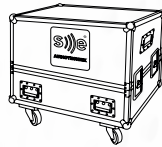
M-F3A PRO SFi 15
Ground stacking
Frame



M-F3A FA34
3 to 4 point adapter



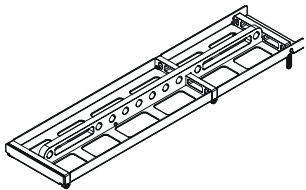
M-F3A FS FB
Multi Purpose
Rigging Frame



M-F3A FC
Flight Case
(for 4 pcs.)



SPS 20
M20 Pole support



M-F3A PRO XBF
Extended bumper
frame for M-F3A FS
and M-F3A PRO



M-F3A SUB FC
Subwoofer Flight
Case (for 2 pcs.)

- **S 12 PRO PC** Padded cover
- **S 15 PRO PC** Padded cover
- **M-F3A CB** Carry bag
- **S 15 PRO FC** Flight Case (for 2 pcs.)

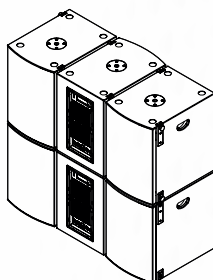
APPLICATIONEXAMPLES

CONCERT



For audiences of up to 1600

- 1 x **M-F3A BF**
Bumper Frame
- 8 x **M-F3A PRO**
Line array units
- 6 x **S12 PRO/S15 PRO**
Subwoofer



Medium-throw Setup

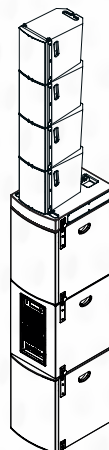
Applications: tours, live concerts, small festivals, multi-purpose halls, event centres

BALLROOM



For audiences of up to 600

- 4 x **M-F3A PRO**
Line array units
- 1 x **M-F3A FS**
Stacking Frame
- 3 x **S12 PRO/S15 PRO**
Subwoofer



Short- to Medium-throw Setup

Applications: stage fills, medium-sized tours, clubs, outdoor stages, concerts

CLUB



For audiences of up to 300

- 2 x **M-F3A PRO**
Line array units
- 1 x **M-F3A**
U-Bracket
- 1 x **S12 PRO/S15 PRO**
Subwoofer



Short-throw Setup

Applications: presentations, public speeches, small events, cafés, bars, stage fills